



ANANDA

An ode to happiness @ Hunter Road, Warangal



SAHASRA
PROJECTS

Ananda is a home
that brings happiness
closer to your life



Ananda is a community
that offers a rewarding lifestyle

Experience a stylish and sophisticated lifestyle, where every detail is crafted for an elevated living.

Redefining the concept of luxury living in Warangal, ANANDA offers expansive, luxurious residences designed to create enduring moments of joy and cherished memories.





OVERVIEW

Project Area
3 Acres

No. of Units
256

Structure
C+S+8 Floors

Types
2, 2.5, 3, 3.5 BHK

Sizes Ranging from
1300 - 2620 Sft.

Clubhouse
20,225 Sft.



Main Entrance Gate



Children Play Area



Seating Spaces



Driveway & Walking Track



Lawn



Half Basketball Court



Pickleball Court



Cricket Net



Skating Rink

Ananda is a home surrounded by vibrant landscape

Discover happiness in a landscape that connects you to nature every day. For a lifestyle surrounded by greenery and tranquility, our beautifully landscaped surroundings offer the perfect escape, blending natural beauty with modern comfort.



Corridor



Living Area



Drawing Room



Master Bedroom



Children Bedroom



Guest Room



Dining Area



Kitchen



Corridor

Ananda is a space of elegance and aesthetics

Discover a space where every detail is thoughtfully crafted to bring warmth and beauty to your home. Every home is a space of elegance and aesthetic grace, offering the perfect blend of beauty and comfort for you and your loved ones.





BLOCK - A

BLOCK - B

BLOCK - A

TYPICAL PLAN



BLOCK - A
2,075 Sft. - W



BLOCK - A
2,075 Sft. - E



BLOCK - A
1,740 Sft. - W



BLOCK - A
1,740 Sft. - E



BLOCK - A
1,740 Sft. - E



BLOCK - A
1,665 Sft. - W



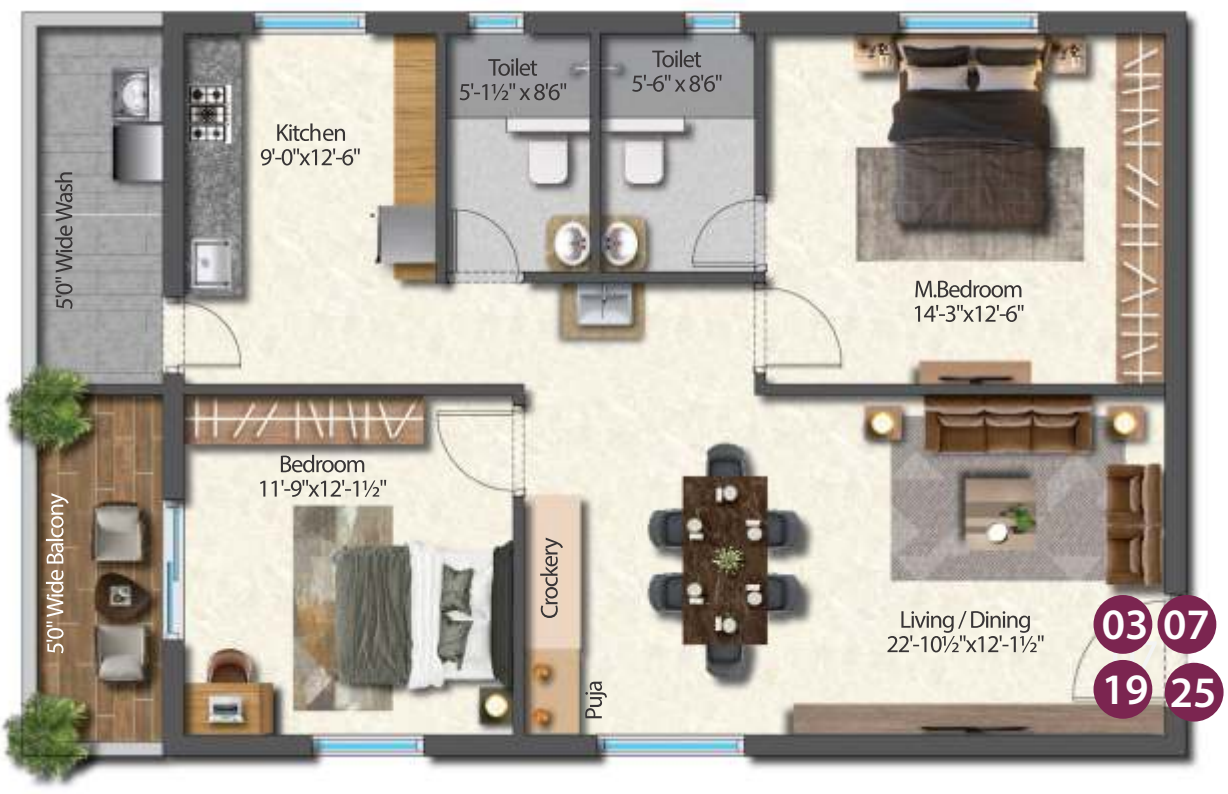
BLOCK - A
1,615 Sft. - N



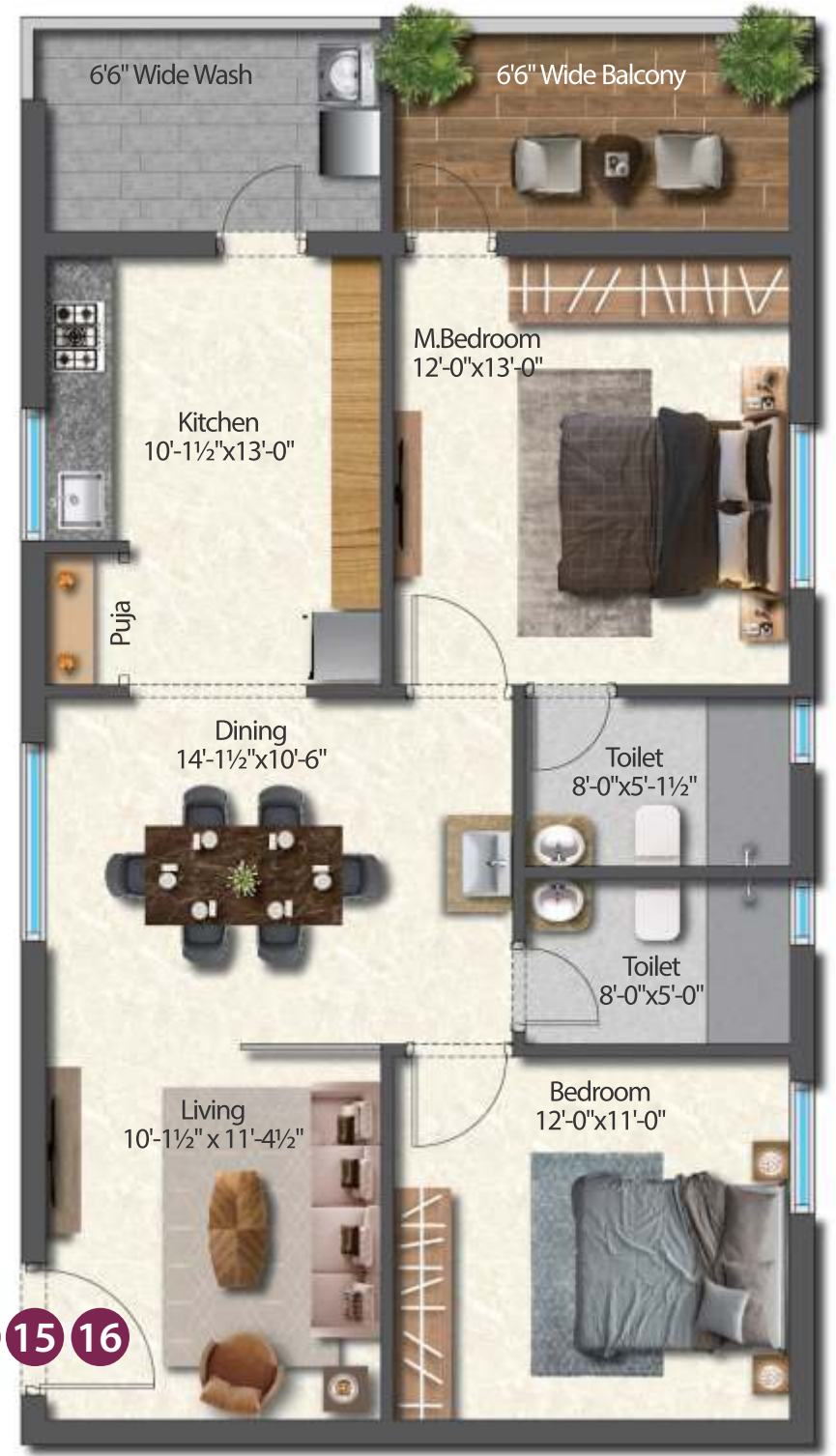
BLOCK - A
1,550 Sft. - E



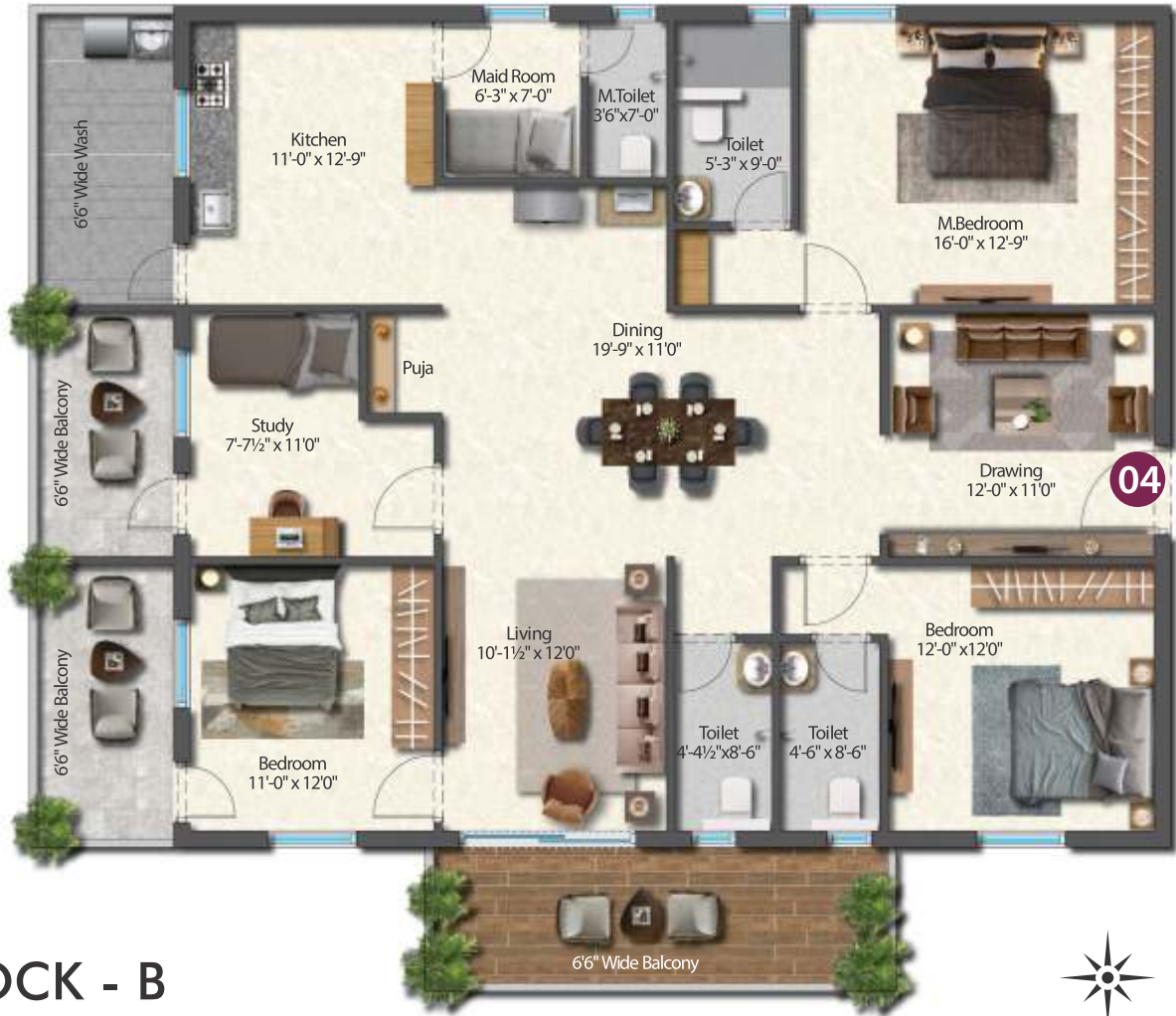
BLOCK - A
1,375 Sft. - W



BLOCK - A
1,300 Sft. - E



BLOCK - B
2,620 Sft. - W



BLOCK - B
2,445 Sft. - W



BLOCK - B
2,620 Sft. - E



BLOCK - B
2,445 Sft. - E



ANANDA

20,225 Sft. Clubhouse



Swimming Pool



Multipurpose Hall



Gym



Yoga



Indoor Games



Terrace Party Area

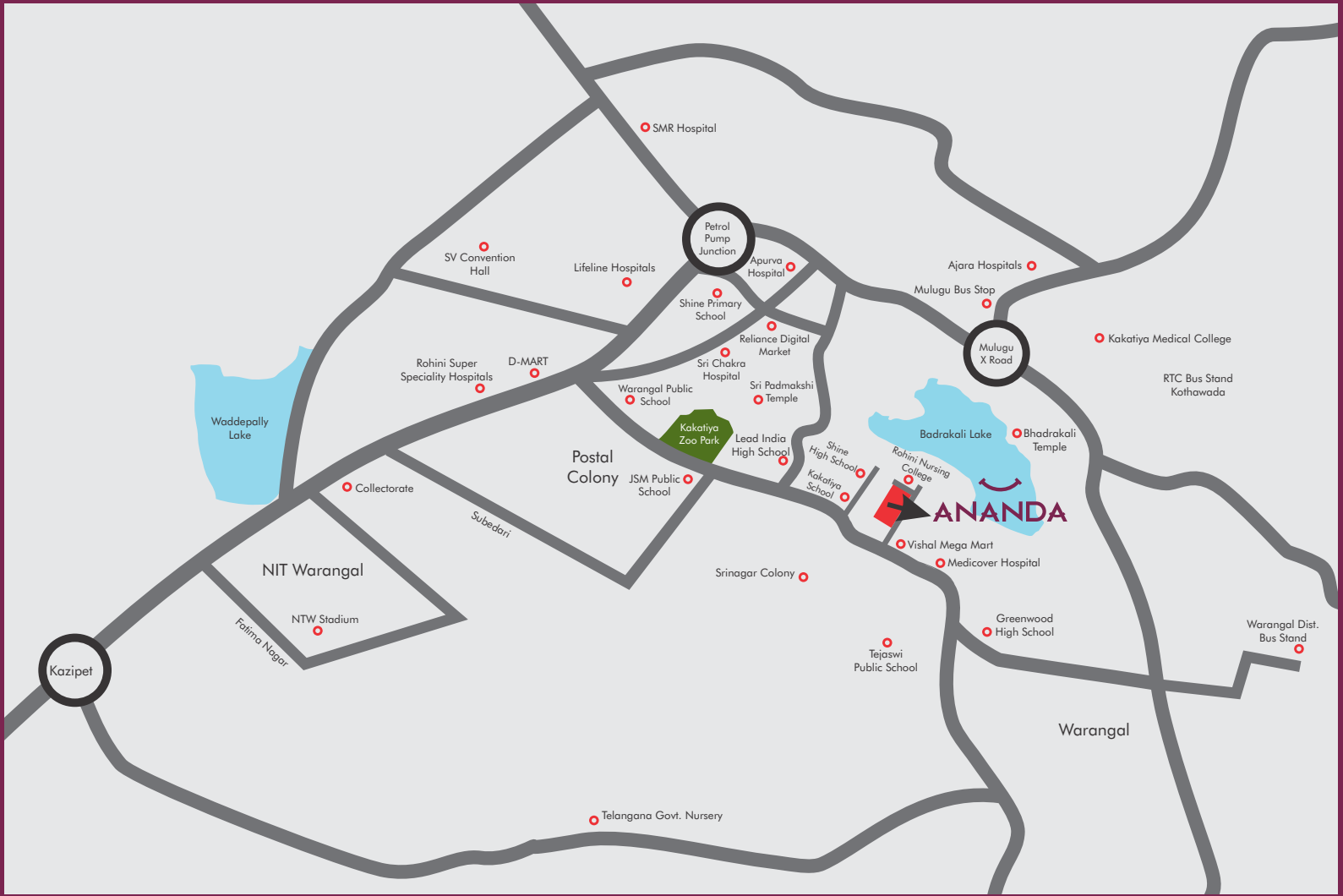
Ananda is living an exciting life every day

Embrace a life of joy, connection, and endless possibilities with a clubhouse that elevates every day, every lifestyle with desired spaces. At ANANDA, happiness isn't just an emotion, it's a way of living.

Clubhouse Amenities

- Grand Reception with Waiting Lounge
- Swimming Pool with Separate Kids Pool & Jacuzzi
- Outdoor Badminton Court
- Outdoor Pickleball Court
- Spacious Banquet / Dining Hall
- Multipurpose Hall for Gatherings
- Well-Equipped Air-Conditioned Gymnasium
- Yoga / Aerobics Room
- Indoor Games like Table Tennis/Carroms/Chess
- 6 Guest Suites
- Senior Citizens Room / Conference Hall
- Party Area on Terrace





Ananda is staying at a convenient location

Experience a lifestyle where each day radiates with brilliance and excitement. Surrounded by the beauty of nature, the ease of convenience, and an undeniable charm, living in ANANDA is a continuous source of joy!



SAHASRA
PROJECTS

Registered Office

H# 4-68/1/18/B, 1st Floor, Khammam X Road., Near IOC Petrol Bunk,
Kodad Town, Suryapet District, Telangana - 508206

Site Office

H# 23-6-187,188 & 189, Sy No's 121/A-D, 123/1, Behind Orugallu Petrol Bunk, Hunter Road.,
Shayampet Jagir Village & Mandal, Hanamkonda, Warangal - 506001

M: +91 888 602 6565 | E: sales@sahasraprojects.com | www.sahasraprojects.com

TS RERA APPROVED NO: P00300008905

DISCLAIMER: All dimensions are in Square Feet, and measured from finish to finish excluding construction tolerances. All materials, dimensions, and drawings are approximate only. Information is subject to change without notice, at developer's absolute discretion. Actual area may vary from the stated area. All images used are for illustrative purposes only and do not represent the actual size, features, specifications, fittings, and furnishings. The developer reserves the right to make revisions / alterations, at it's absolute discretion, without any liability whatsoever.